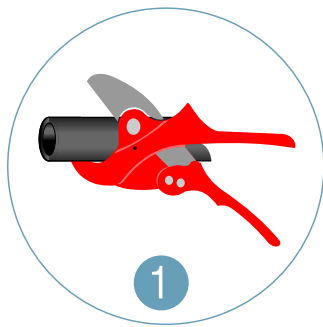
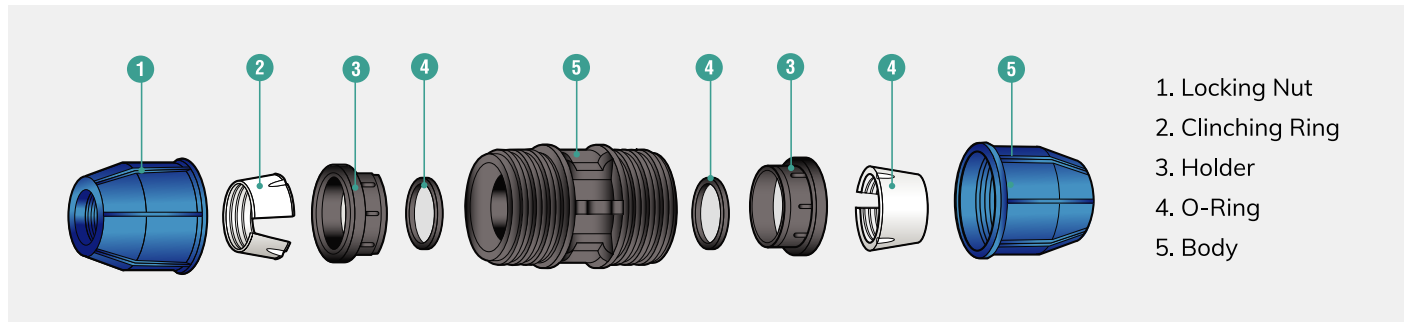
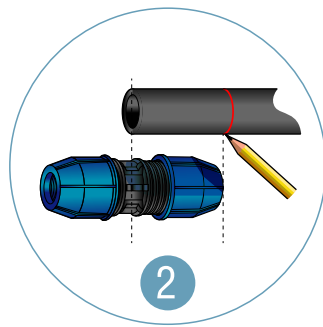


## INSTALLATION INSTRUCTIONS

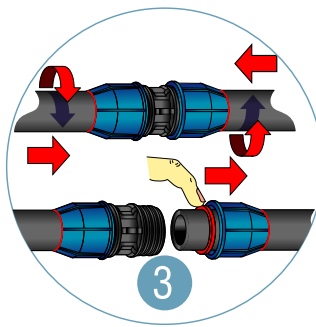
# PP Push-Fit Compression Fittings



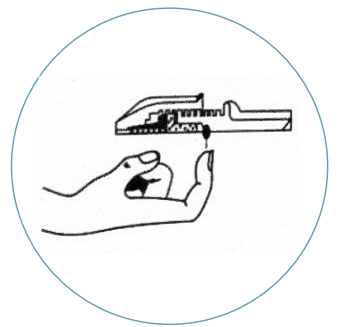
Cut the pipe with a proper pipe cutter. Clean the burr at the pipe end.



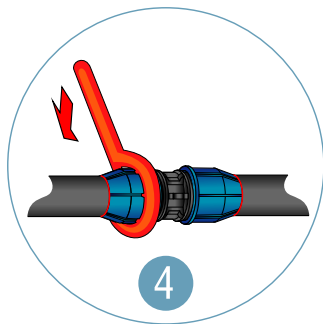
Mark the insertion depth on the pipe according to the "Insertion Table".



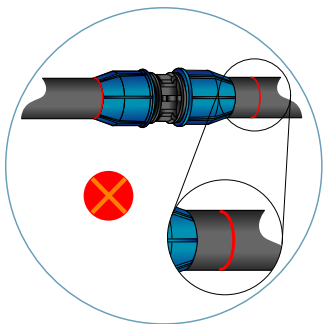
Loosen the locking nut by 2 or 3 threads without removing the locking nut, insert pipe into the fitting to the correct depth according to the "Insertion Table".



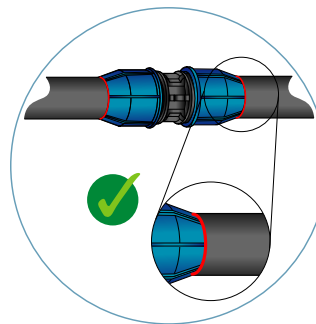
\*Size: 40, 50, 63, 75, 90 & 110mm. The NBR O-ring should be adjusted back to the correct position with your finger before pipe is being pushed in and tightened.



The locking nut can be tightly fastened by hand up to size 32mm OD. For sizes larger than 32mm OD, it is advisable to use strap wrench or other proper tools.



The pipe is not fully inserted into the fitting.



Ensure the marking on the pipe is as shown in the picture. To ensure the fitting is fully fastened, ascertain that the locking nut exceeds the last thread of the body.

INSERTION TABLE	
Pipe OD (mm)	Insertion Depth (mm)
16	35
20	50
25	65
32	70
40	80
50	90
63	100
75	106
90	130
110	155