

FISH Butt Fusion Fittings



Advantages at a glance

- ✓ UV stabilized to perform in harsh sunlight conditions.
- ✓ Single injection molded fittings
- ✓ Large range ensures there is a fitting to adapt to most installations.
- ✓ Resin material compatibility to most PE100 pipelines.
- ✓ Products are tested to meet water standards.



Materials	
Product	Material
All fittings	Polyethylene PE100

Fittings specifications

Specification		
Material	PE100	
Colour	Black	
Melt flow index (5kg/190°C)	0.24 g/10min	ISO 1133
Density	- 960 kg/m ³	ISO 1183
Tensile Strength at Yield	24 MPa	ISO 527
Flexural modulus	1000 MPa	ASTM D 790
Elongation at break	> 600%	ISO 527
Carbon Black Content	2.25% by mass	ISO 6964
MRS Classification	10.0	ISO 12162 / ISO 9080
Oxidative Induction Time (@ 210 °C)	≥ 40	ISO 11357-6
Standard	MS 1058 : PART 3 : 2006	
Packaging	Fittings are bagged	
Marking and labeling	To ensure traceability, all fittings are permanently marked with identification during the production process. <ul style="list-style-type: none"> • Brand name • Material and designation • Dimensions • SDR fusion range 	

Normative references

- MS 1058 : PART 3 – Polyethylene (PE) Piping Systems For Water Supply – Part 3 : Fittings
- ISO 4427 : PART 3 – Plastics piping Systems – Polyethylene (PE) pipes and fittings for water supply – Part 3: Fittings
- EN 12201 : PART 3 – Plastics piping Systems for water supply – Polyethylene (PE) – Part 3: Fittings

*Standards & Approval:

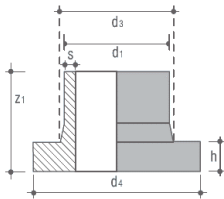


*All standards and approvals certification available upon request.

FISH Butt Fusion Fittings

STUB END – Short Collar

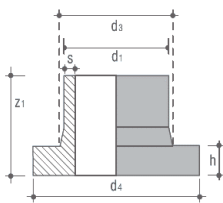
Material: PE100 | Colour: Black | Water application | SDR 13.6 | PN 12.5



STUB END - Short Collar

Product Code	d1 [mm]	d3 [mm]	d4 [mm]	Z1 [mm]	S [mm]	h [mm]	pcs / bag [qty]
07960600187	63	75	102	50	4.7	14	150
07960600192	90	105	130	80	6.7	17	50
07960600196	110	125	158	80	8.1	18	40
07960600200	125	132	158	80	9.2	25	30
07960600203	160	175	212	80	11.8	25	20
07960600207	180	181	212	80	13.3	30	20
07960600210	200	232	268	100	14.7	32	12
07960600213	225	235	268	100	16.6	32	12
07960600217	250	285	320	100	18.4	35	8
07960600221	280	291	320	110	20.6	35	7
07960600224	315	335	370	110	23.2	35	5
07960600228	355	373	430	120	26.1	40	4
07960600230	400	427	482	120	29.4	46	1
07960600232	450	514	550	130	33.1	46	1

Material: PE100 | Colour: Black | Water application | SDR 11 | PN 16

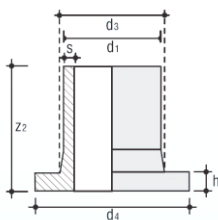


STUB END - Short Collar

Product Code	d1 [mm]	d3 [mm]	d4 [mm]	Z1 [mm]	S [mm]	h [mm]	pcs / bag [qty]
07960600188	63	75	102	50	5.8	14	150
07960600189	90	105	130	80	8.2	17	50
07960600197	110	125	158	80	10.0	18	40
07960600342	125	132	158	80	11.4	25	30
07960600204	160	175	212	80	14.6	25	20
07960600343	180	181	212	80	16.4	30	20
07960600344	200	232	268	100	18.2	32	12
07960600214	225	235	268	100	20.5	32	12
07960600218	250	285	320	100	22.7	35	8
07960600313	280	291	320	110	25.4	35	7
07960600225	315	335	370	110	28.6	35	5
07960600319	355	373	430	120	32.2	40	4

STUB END – Long Collar

Material: PE100 | Colour: Black | Water application | SDR 13.6 | PN 12.5

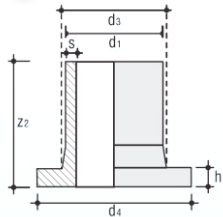


STUB END - Long Collar

Product Code	d1 [mm]	d3 [mm]	d4 [mm]	Z2 [mm]	S [mm]	h [mm]	pcs / bag [qty]
07960600134	25	33	58	85	2.0	9	300
07960600135	32	40	68	85	2.4	10	200
07960600136	50	61	88	85	3.7	12	150
07960600138	63	75	102	95	4.7	14	150
07960600141	90	105	130	140	6.7	17	50
07960600145	110	125	158	160	8.1	18	40
07960600149	125	132	158	170	9.2	25	30
07960600152	160	175	212	200	11.8	25	20
07960600156	180	180	212	200	13.3	30	20
07960600159	200	228	268	200	14.7	32	12
07960600163	225	235	268	200	16.6	32	12
07960600167	250	285	320	200	18.4	35	8
07960600171	280	291	320	200	20.6	35	7
07960600175	315	335	370	200	23.2	35	5

FISH Butt Fusion Fittings

STUB END – Long Collar



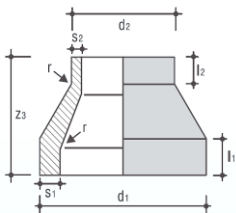
Material: PE100 | Colour: Black | Water application | SDR 11 | PN 16

STUB END - Long Collar

Product Code	d1 [mm]	d3 [mm]	d4 [mm]	Z2 [mm]	S [mm]	h [mm]	pcs / bag [qty]
07960600139	63	75	102	95	5.8	14	150
07960600142	90	105	130	140	8.2	17	50
07960600146	110	125	158	160	10.0	18	40
07960600256	125	132	158	170	11.4	25	30
07960600153	160	175	212	200	14.6	25	20
07960600274	180	180	212	200	16.4	30	20
07960600160	200	228	268	200	18.2	32	12
07960600164	225	235	268	200	20.5	32	12
07960600168	250	285	320	200	22.7	35	8
07960600172	280	291	320	200	25.4	35	7
07960600011	315	335	370	200	28.6	35	5

REDUCER

Material: PE100 | Colour: Black | Water application | SDR 13.6 | PN 12.5



REDUCER

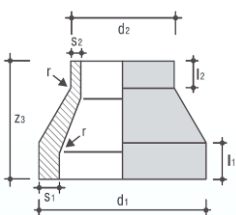
Product Code	d1 x d2 [mm]	l1 [mm]	l2 [mm]	Z3 [mm]	S1 x S2 [mm]	pcs / bag [qty]
07960600077	90 x 63	22	16	75	6.7 x 4.7	60
07960600080	110 x 63	28	16	90	8.1 x 4.7	50
07960600086	110 x 90	28	22	90	8.1 x 6.7	50
07960600089	125 x 90	32	22	100	9.2 x 6.7	40
07960600092	160 x 90	40	22	120	11.8 x 6.7	35
07960600095	160 x 110	40	28	120	11.8 x 8.1	30
07960600099	180 x 90	45	22	130	13.3 x 6.7	20
07960600102	180 x 110	45	28	130	13.3 x 8.1	20
07960600105	180 x 125	45	32	130	13.3 x 9.2	20
07960600108	200 x 110	50	28	145	14.7 x 8.1	14
07960600111	200 x 125	50	32	145	14.7 x 9.2	14
07960600114	200 x 160	50	40	145	14.7 x 11.8	14
07960600117	200 x 180	50	45	145	14.7 x 13.3	14
07960600120	225 x 160	55	40	160	16.6 x 11.8	12
07960600123	225 x 180	55	45	160	16.6 x 13.3	12
07960600129	250 x 110	60	35	175	18.4 x 8.1	10
07960600132	250 x 180	60	45	175	18.4 x 13.3	10



Material: PE100 | Colour: Black | Water application | SDR 11 | PN 16

REDUCER

Product Code	d1 x d2 [mm]	l1 [mm]	l2 [mm]	Z3 [mm]	S1 x S2 [mm]	pcs / bag [qty]
07960600096	160 x 110	40	28	120	14.6 x 10.0	30



FISH Butt Fusion Fittings

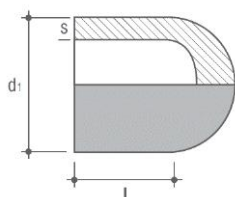
END CAP



Material: PE100 | Colour: Black | Water application | SDR 13.6 | PN 12.5

END CAP

Product Code	d1 [mm]	l [mm]	s [mm]	pcs / bag [qty]
07960600063	63	60	4.7	150
07960600065	90	90	6.7	40
07960600067	110	90	8.1	30
07960600070	125	90	9.2	20
07960600072	160	120	11.8	16
07960600074	180	130	13.3	15



Material: PE100 | Colour: Black | Water application | SDR 11 | PN 16

END CAP

Product Code	d1 [mm]	l [mm]	s [mm]	pcs / bag [qty]
07960600068	110	90	10	30
07960600341	125	90	11.4	20
07960600071	160	120	14.6	16

