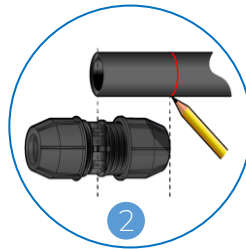


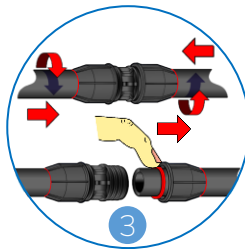
FISH® Compression Fittings Installation Manual



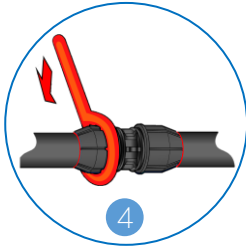
Cut the pipe with a proper pipe cutter. Clean the burr at the pipe end.



Mark the insertion depth on the pipe according to the "Insertion Table".

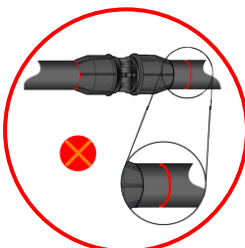


Loosen the locking nut by 2 or 3 threads without removing the locking nut, insert pipe into the fitting to the correct depth according to the "Insertion Table".

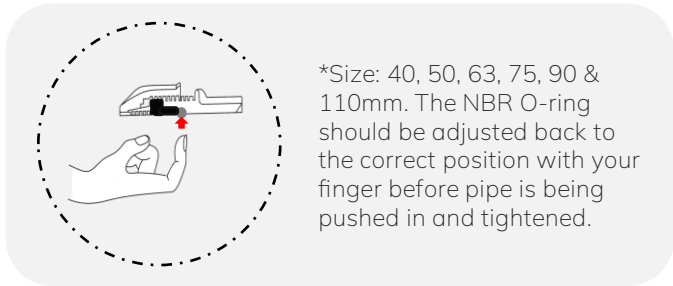


The locking nut can be tightly fastened by hand up to size 32mm OD. For sizes larger than 32mm OD, it is advisable to use strap wrench or other proper tools.

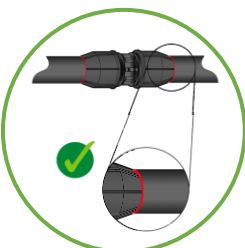
Precaution:



The pipe is not fully inserted into the fitting.



*Size: 40, 50, 63, 75, 90 & 110mm. The NBR O-ring should be adjusted back to the correct position with your finger before pipe is being pushed in and tightened.



Ensure the marking on the pipe is as shown in the picture. To ensure the fitting is fully fastened, ascertain that the locking nut exceeds the last thread of the body.

INSERTION TABLE			
Pipe OD (mm)	Insertion Depth (mm)	Pipe OD (mm)	Insertion Depth (mm)
20	50	63	100
25	65	75	106
32	70	90	130
40	80	110	155
50	90		